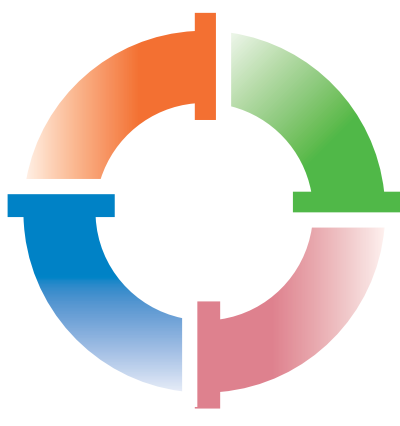


# WORLD PLUMBING DAY



# wpd

## MARCH 11 2018

The Canadian Institute of Plumbing & Heating (CIPH) is proud to celebrate World Plumbing Day. Plumbing organizations across the country are joining CIPH to undertake activities with the aim of raising awareness to the important role played by the global plumbing industry.

Canada represents 20% of the world's fresh water supply.

### Rivers

Annually, Canada's rivers discharge 7% of the world's renewable water supply - 105,000 cubic metres per second.

# 7%



Health problems related to water pollution are estimated to cost Canadians \$300 million per year.

Canadian lakes cover a total area greater than 890,000 square kms.



The combined shoreline of the Great Lakes is equal to about 45% of the earth's circumference.

# 45%

About 75% of all agricultural water withdrawals in Canada take place on the Prairies, mainly for irrigation.

25% of Canada's agricultural capacity is supported by the Great Lakes.



The Great Lakes provide drinking water to 8.5 million Canadians.



# 31,328

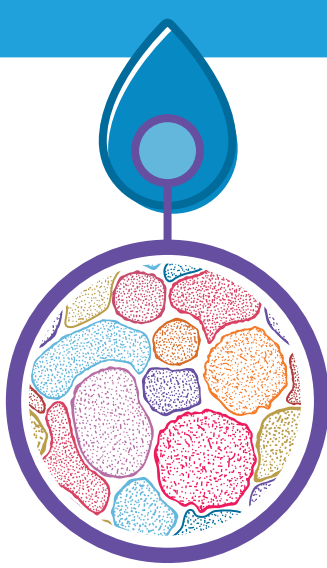
SQUARE KMS

Great Bear Lake, located in the NWT, is the largest lake in Canada at 31,328 square kms.

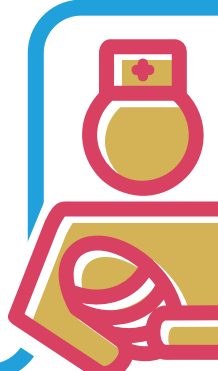
Two thirds of Canadian water used in a home is used in the bathroom. Nearly 40% gets flushed down toilets, while more than 30% is used in showers and baths.



Preventable diseases related to water and sanitation claim the lives of more than 3 million people annually, mostly children. This is comparable to the population of Vancouver.



Every minute a newborn dies from infection caused by lack of safe water and an unclean environment.



More people in the world have mobile phones than toilets.

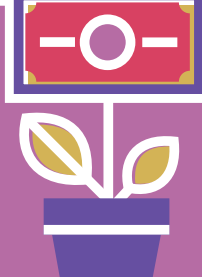
Are you kidding me?



Every \$1 invested in water and toilets returns an average of \$4 in increased productivity.

# \$6,000,000,000

Member companies of CIPH exceed \$6 billion in annual sales.



# 280+

CIPH represents the interests of our more than 280 members and over 20,000 employees across Canada.

### Water

Using a broom instead of a garden hose to clean your driveway will save 13 gallons every minute you clean.

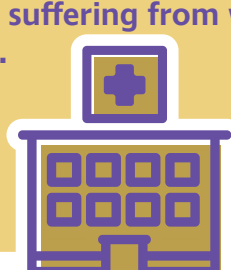


CIPH trade shows annually attract over 35,000 decision makers, including: wholesalers, contractors, architects, engineers, designers, builders, renovators and retailers.



### Health

At any given time, half of the world's hospital beds are occupied by patients suffering from water-related diseases.



### Environment

Earth's population could grow by 3 billion in the next 50-75 years, further stretching fresh water resources.



1/3 What the world spends on bottled water in one year could pay for projects providing water to everyone in need.

A 5 minute shower uses 200L of water.

About 26,000L of water is required to grow a day's food for a family of four.

You use 8L to flush a toilet - about the same as you use to brush your teeth.

It takes 15,000L of water to produce 1 kg of beef.

## Fast Facts



#WORLDPLUMBINGDAY

WPLUMBINGDAY

@CIPH news